

SOLOPRO+ PTZ Pipe Inspection Camera



- 40 metre
- 60 metre
- 100 metre
- 120 metre



Ruggedised water & sewerage pipe inspection cameras for easier underground inspection
Engineered to perform.

Camera Modules

STANDARD

CAM025



SELF-LEVELLING
AXIAL

CAM026



PAN & ROTATE

OPTIONAL

CAM050



PAN,
ROTATE
&
LASER

CAM026L



Minicam, UK has been producing pipeline inspection systems for 30 years. Minicam is a part of Halma PLC group, one of Britains most admired companies .

00.0

METERAGE
MEASUREMENT



GENERATE CLIENT
ORIENTED REPORTS



GENERATE PIPELINE
GRAPH REPORT



SONDE



JOYSTICK
CAMERA CONTROL



CAPTURE IMAGES



RECORD VIDEOS



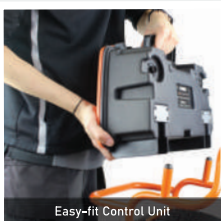
32GB IN-BUILT
128GB OPTIONAL



ACCESS FILES
REMOETLY



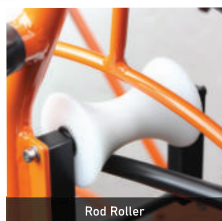
SD & PENDRIVE
SUPPORTED



Easy-fit Control Unit



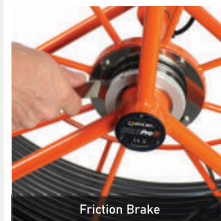
Heavy Duty Camera Connector



Rod Roller



Integrated Meterage Measurement



Friction Brake



Heavy Duty Wheels

SOLOPRO+ PTZ Pipe Inspection Camera



Approved Precision Camera Options

The SOLOPRO+ is available with 2 camera set : CAM025 AXIAL, CAM026 PAN/ROTATE or a Duo option which includes supply of both cameras



All cameras on the SOLOPRO+ system are interchangeable.



CAM025

The CAM025 is a Self-Leveling AXIAL camera which provides images which are always upright.



Flexible Heavy Duty Connector



4 Ultra- Bright LED Lights + Scratch- Resistance Sapphire Glass



Camera Connector Lock

The AXIAL "Self-Leveling" feature allow sensors to detect when the camera is tilted or rotated and then adjust the camera lens to compensate for the movement.

Video will always stay upright!



75° Fov

SOLOPRO+ PTZ Pipe Inspection Camera



Approved Precision Camera Option : CAM 026

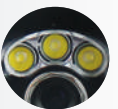


CAM026 Pan & Rotate

The CAM026 PAN & Rotate is for clients requiring advanced analysis of the pipelines & branches inside of pipelines using Lateral KIT.



Impact Resistant Rubber Protectors



PAN +/-135°



Aperture : F2.5, FOV, 75°, 512 x 582 Effective pixel,

Dual Clusters Of 3 High Powered Ultra-bright LED lights with Scratch-Resistance Sapphire Glass



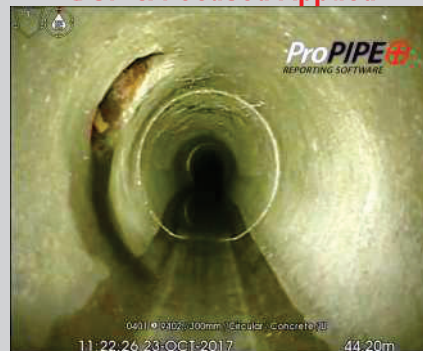
360° Rotation



Motorized Focus Feature

CAM026 will automatically adjust the focus of the lens based on changes in the distance between the camera and the subject being filmed.

DSP & Focused Applied

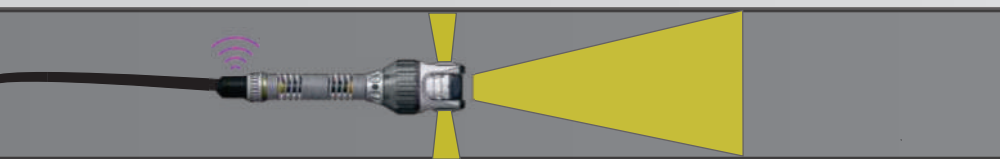


Without DSP & Focus



Integrated DSP (Digital Signal Processor) is a specialized fast micro-processor that is designed to adjust color color correction, image sharpening & white balance in realtime.

- Possible Inspection area of CAM026, inspect a full pipe joint closely.
- Multi-Frequency Sonde 33kHz, 512Hz & 640Hz, Built in



SOLOPRO+ PTZ Pipe Inspection Camera

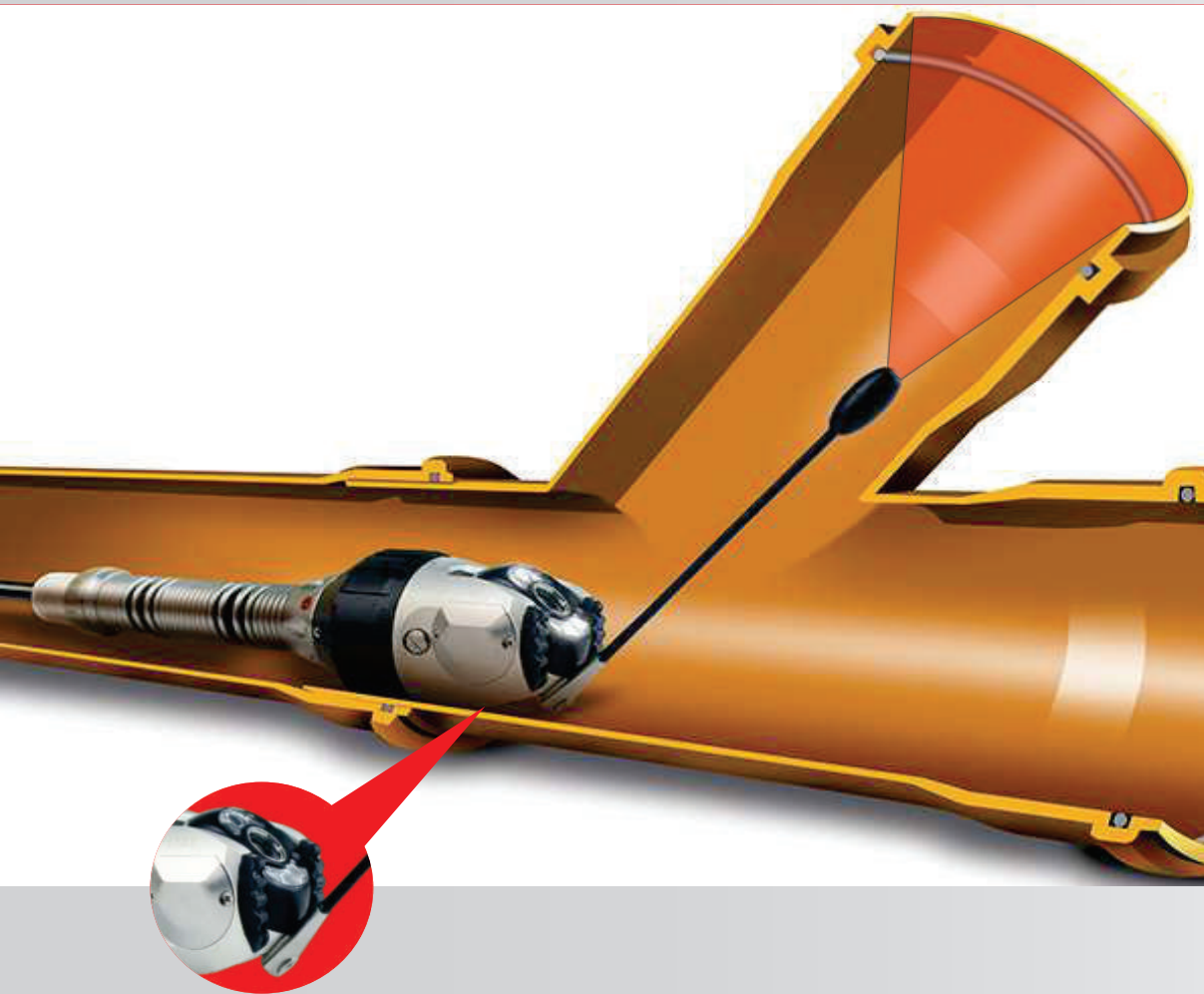


Inspection Of Lateral Pipes Or Branches Inside Main Pipeline

LATERAL PIN KIT : Accessory Option

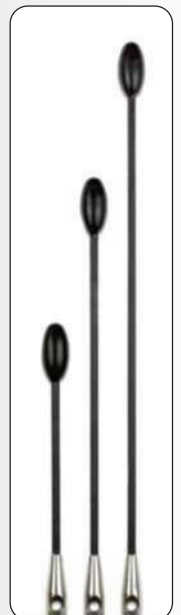
A must have accessory for the smooth inspection of incoming laterals. A useful addition to the SOLOPRO+ Video Inspection System.

The pin adjusts the direction and guides the camera smoothly along the pipe.



Used exclusively with the Pan & Rotate camera (CAM026) simply attach the pin to allow the inspection of incoming lateral pipes.

Technical Specifications	
Product Code	ASS-001-968
Small Pin Length	150mm (6in)
Medium Pin Length	225mm (9in)
Large Pin Length	300mm (12in)
Fixings Supplied	6 Screws



SOLOPRO+ PTZ Pipe Inspection Camera

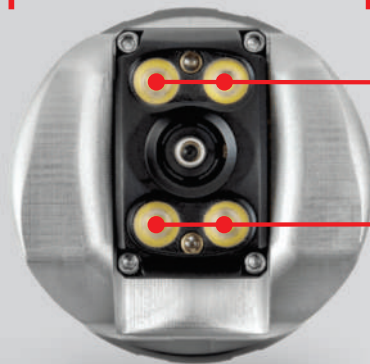


Pan, Rotate and Laser Camera: CAM050

Compact Pan, Rotate & Laser Camera

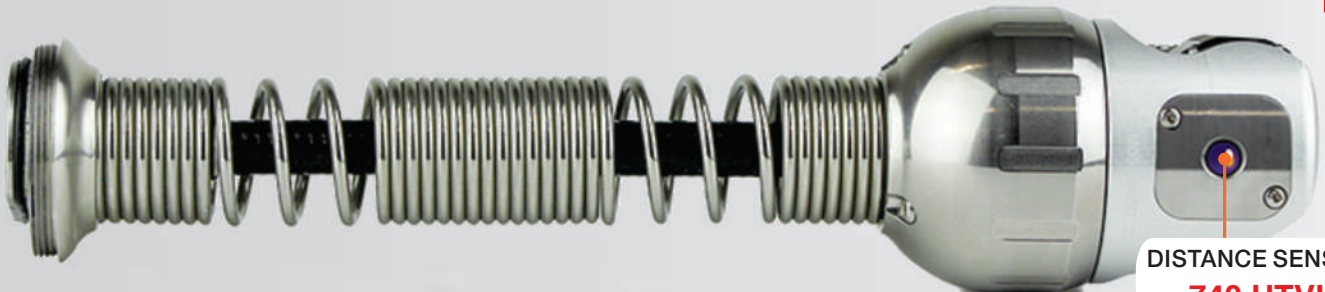
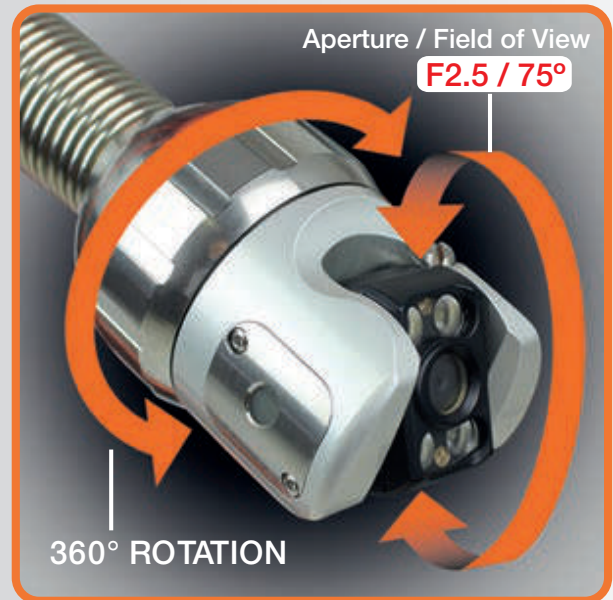
Expertly engineered in stainless steel and aluminium, this robust camera offers maximum pan and rotate flexibility for use in small diameter pipe applications, from 50mm up. The camera features an integral distance sensor and dual aligned visible lasers, to enable accurate pipe diameter, defect and object measurement, directly from the SOLOPro+ control unit. The precision camera lens and four ultra-bright LED's guarantee clear, defined, quality inspection images.

- ✓ 360° CONTINUOUS ROTATION
- ✓ +/-135° PAN
- ✓ DUAL ALIGNED LASERS
- ✓ DISTANCE SENSOR
- ✓ 4 ULTRA-BRIGHT LEDs



4 ULTRA-BRIGHT LEDs

DUAL ALIGNED LASERS



DISTANCE SENSOR
740 HTVL

SOLOPRO+ PTZ Pipe Inspection Camera



Pan, Rotate and Laser Camera: CAM026L

Continuous 360° rotation +/-135° pan.

Features an integral distance sensor & two aligned lasers to enable accurate pipe diameter, defect & object measurement.

6 High powered ultra-bright LEDs, heavy duty connector prevents ingress to the connections.

DSP (Digital Signal Processor) automatically adjust color correction, image sharpening & white balance in realtime.



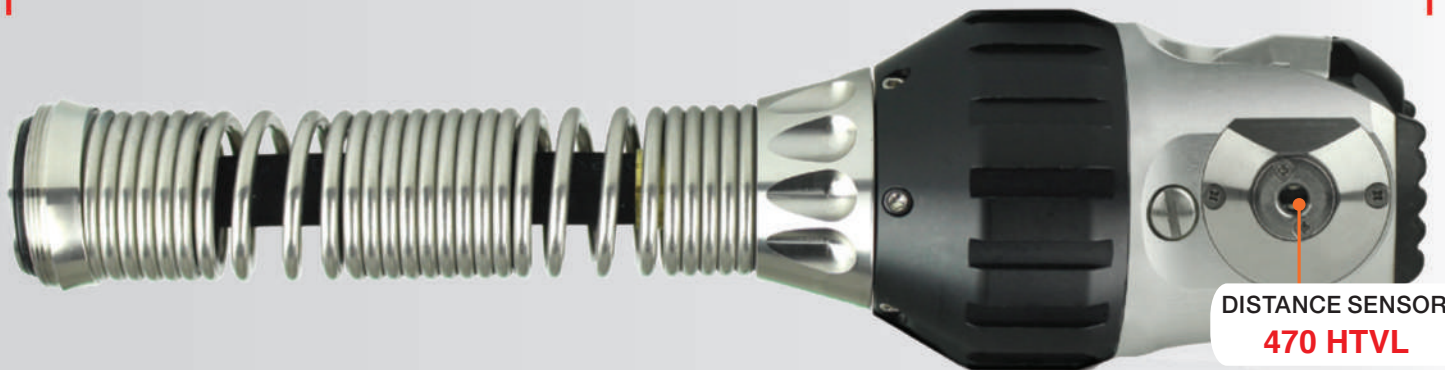
Front View



Side View



132mm



SOLOPRO+ PTZ Pipe Inspection Camera



CCU210 Control Unit Functionality At Your Fingertips

HOTKEYS

Intuitive, user-friendly, multi-function keys. The colour coding mirrors the key to the on-screen menu



CAPTURE FOOTAGE

Record MPEG video and capture JPEG images, and zoom up to 3X on video playback



ILLUMINATION

Increase or decrease the intensity of the ultra-bright ca



JOYSTICK CONTROL

Movement of camera is smooth & effortless using the joystick control. Perform a 360° endless rotation and pan the camera +/- 135°



REVIEW FOOTAGE

Organize videos and images into folders, then find them using the thumbnail gallery. Review media using standard controls



CONTROL METERAGE

Accurately set the meterage zero offset using the meterage key

00.0

SURVEY FEATURES

Access embedded reporting software to create detailed on-site reports



SCREEN INTENSITY

The brightness, color and backlight intensity of the internal display can be adjusted



SONDE SETTINGS

Set the frequency of the sonde transmitter. Selectable frequencies of 33kHz, 512Hz and 640Hz



SETUP DEVICE

Configure to your specific requirements using the various menu options. Set language, date & time establish file formats, naming conventions; adjust camera parameters; choose interface themes, enable power saving options and update firmware



SHARE FILES

WiFi enabled to allow remote access to stored images and data. Users can instantly share PDF reports, images and footage via email, or upload WinCan Reports via the Cloud to WinCan Web for secure, immediate team-wide access online

OFFLOAD DATA

Copy video, images & data to USB or SDHC media for easy transfer to PC



SOLOPRO+ PTZ Pipe Inspection Camera



Centralizer Skids

Centering skids are included as a standard with SOLOPRO+, allows to centralise camera view in pipes of 75mm and larger.

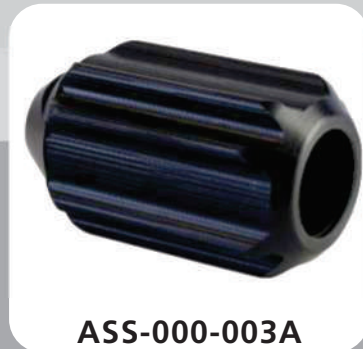
Exclusively used with AXIAL CAM025, the skids are quick and simple to attach using the supplied tool.



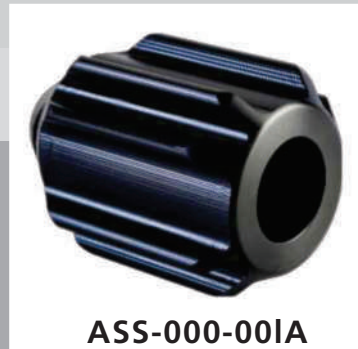
Available in 3 sizes 3", 4" & 6".



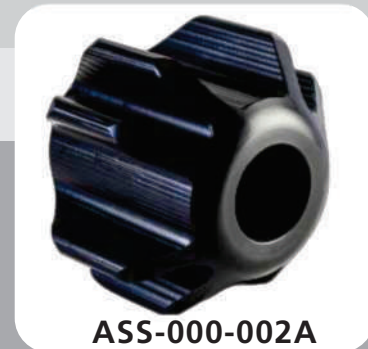
ASS-000-667



ASS-000-003A





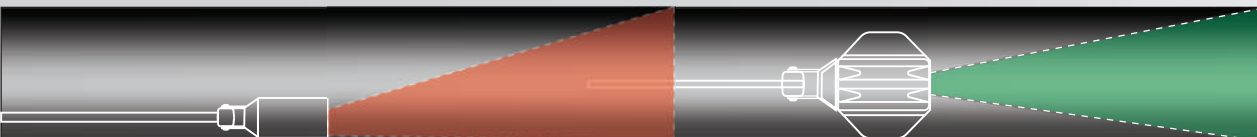
ASS-000-001A



ASS-000-002A

Centering Skids allows **additional height elevation** for centralising camera inside pipelines & to protect camera lens from punishment of daily field work.

-  Inspection area without Centraliser
-  Inspection area with Centraliser



SOLOPRO+ PTZ Pipe Inspection Camera



Reporting Softwares

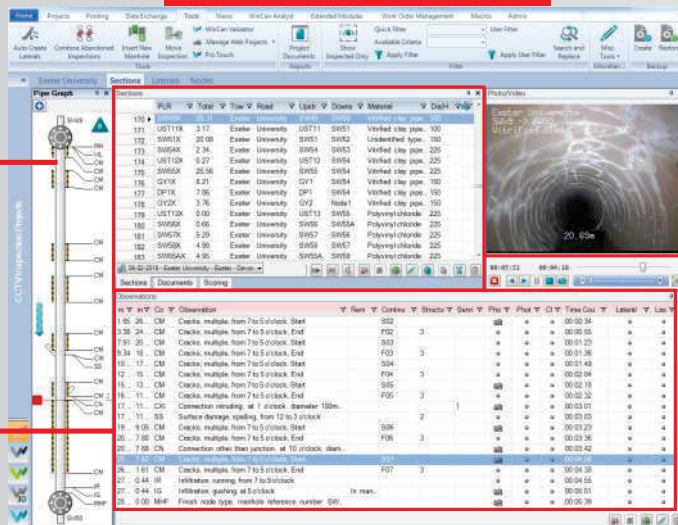


PROPIPE+, WinCan WEB & WinCan VX (expert) Web software is pre-installed as standard on the SOLOPro+ control unit, giving the ability to create 3D pipeline graph report, with images & detailed analysis of defects found in the pipeline.



WinCan VX is an AI Based Smart Sewer Inspection software program designed for managing sewer and pipeline inspections, offers a wide range of features to make the process of inspecting, analyzing and managing pipeline data easier and more efficient.

WinCan Software



3D graph of pipeline along with pinpointed defects

Detailed defects report with Images & Video

(GIS) Geographic Information System is a mapping system can be used to display the location, condition, and other important information about pipes and other underground infrastructure.



SOLOPRO+ PTZ Pipe Inspection Camera



Specifications

SOLOPro+ Coiler		
Features	ROD roller, friction brake, meterage measurement, SONDE (built-in multi-frequency 512Hz, 640Hz & 33KHz)	
Length range options	40m, 60m, 100m, 120m	
Control Unit CCU210		
Display	8" TFT LCD (800 x 600 pixels) sunlight viewable	
Keyboard	Qwerty membrane keyboard & Joystick for camera control	
Softwares	PROPIPE+, Wincan VX, Wincan web	
File sharing	Via Email, Wifi, or Pendrive & SD card	
Reports	On-site Client oriented PDF reports or pinpointed errors report with pipe graph	
Internal memory	32GB, expandable to 128GB	
External media	USB 2.0, SD Card	
Video recording & Image capture	MPEG4 / JPEG (take images live or capture from recording)	
Power & Battery	Mains power (100-240 Vac) & 6 hours battery back up (Lithium ION)	
Ingress protection	IP54 protection against dust & water splashes	
Dimension & weight	435 x 250 x 140mm / 3KG	
Cameras	CAM025 Self-Levelling AXIAL	CAM026 Pan & Rotate
Effective pixels	512 X 582	
Aperture / FOV	F2.5 / 75°	
Image orientation	Auto-levelling	Pan & rotate
Illumination system	4 LEDs	6 LEDs
Illumination sensitivity	1.0 lux	
Illumination Intensity	Adjustable to 12.5k lux at 150mm	
Pressure depth rating	1 bar (14.50PSI)	
Pipe compatibility	50mm / 2" or higher	150mm / 6" or higher
Camera centralisers	3" / 4" / 6"	6" / 8"
Camera module size & weight	271 x 41 x 41mm / 620g	120 X 73 x 73 / 861g
Housing	Stainless steel	Aluminum & Stainless steel
Optional Accessories		



16GB / 32GB



Roller Skids



SPP EVL
Video Input Cable



Tilting Table

SOLOPRO+ PTZ Pipe Inspection Camera



The Centralizer Roller Skids Optional Accessory

Centering roller skid is for ensuring that the camera is properly centered & aligned within the pipe to negotiate multiple corners, bends & increase the depth of range significantly.

The roller skids expand the SOLOPro+ system for use in 6" to 9" pipelines



For CAM026



ASS-002-160 / 130mm Roller Skid

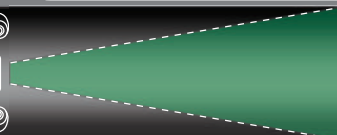
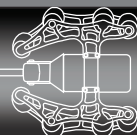


For CAM025



ASS-002-009 / 180mm Roller skid

ASS-002-008 / 130mm Roller Skid



11 OFFICES
OVER 1800 CUSTOMERS
15 PRODUCT CATEGORIES

asian contec ltd.

ACL is the trusted source for Equipment & Instrumentation for Project Execution in Infrastructure & Utilities, Quality Control & MRO supplies.



For more information, visit www.stanlay.in

STANLAY™
Dakota Ultrasonic Material Inspection Instrumentation 2021-22

Bolt Tension Monitor

Low Voltage High Current
 High Voltage High Current
 High Voltage High Current

STANLAY™
TELECOM TEST & MEASUREMENT INSTRUMENTS 2021-22
 BOOK-2

- OTDR & MINI OTDR
- OPTICAL POWER METER & LASER / LED SOURCES
- BER TESTING INSTRUMENTS
- LIVE TONER DEVICES
- OPTICAL TOSA SET
- VARIABLE OPTICAL ATTENUATOR
- BACKSCATTER NETWORK ANALYZER 16.4 TDR
- TDR CABLE FAULT LOCATOR
- STANDARD CABLE TESTER
- OPTICAL TDR SET
- FIBER WIND INSPECTION SYSTEM

Quality In Telecom, Delivered.

STANLAY™
Precision Pipe & Cable Locating Equipment 2019-20

PATHFINDER

3 MHz 5 MHz High Power 12 MHz

Quality In Construction, Delivered.

STANLAY™
ELECTRICAL TEST & MEASUREMENT INSTRUMENTS FOR ELECTRICAL, TELECOM & MRO 2021-22

- HANDHELD MULTIMETER
- TRUE RMS MULTIMETER
- AC/DC CLAMP METER
- PRECISION CLAMP METER
- AC/DC LEAKAGE CLAMP METER
- EARTH RESISTANCE TESTER
- STAKELESS GROUND TESTER
- POWER ANALYZER
- POWER CLAMP METER
- INSULATION TESTERS
- LIGHT, SOUND & WIND TESTER
- TACHOMETER
- INFRARED THERMOMETER
- OSCILLOSCOPE

Telecom | Power | Oil & Gas | Water | Building & Road Construction | Heavy Engineering | Industries | Railways